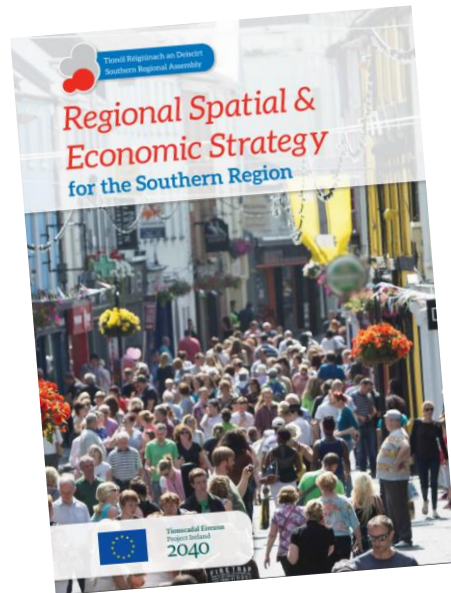


Ten- Minute Towns



“10 Minute Town” Concept




RPO 176

10-minute” city and town concepts


It is an objective to attain sustainable compact settlements with the “10-minute” city and town concepts, whereby, a range of community facilities and services are accessible in short walking and cycle timeframes from homes or are accessible by high quality public transport services by connecting people to larger scaled settlements delivering these services. Local authorities should ensure that decision making in relation to new infrastructure for improved connectivity is informed by an appropriate level of environmental assessment.

- 

1. Compact Growth
- 

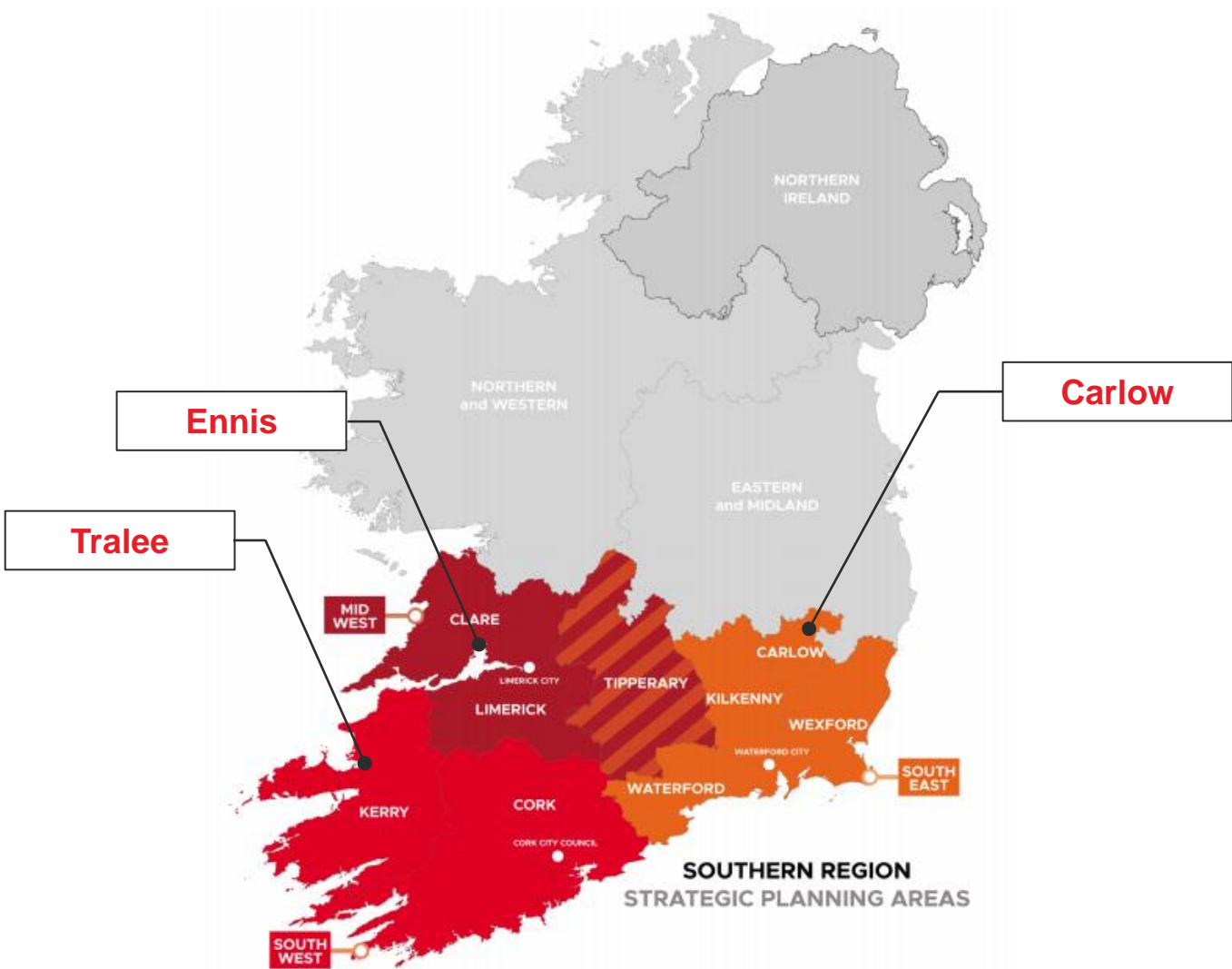
4. Sustainable Mobility
- 

5. A Strong Economy
- 

8. Low Carbon, Climate Resilient and Sustainable Society
- 

9. Sustainable, Planned and Infrastructure-led Development

Introduction to the Project



Purpose of the Framework

Create a framework for good practice guidance

(can be used by other towns to map and adapt the same '10 Minute Town' concept)

Not a policy or land use document

(Local Authorities can, at their discretion, use the findings of this work to inform any policy documents, land use plans and transportation studies)

Implementation tool

(to assist Local Authorities to undertake a '10 Minute Town' assessment)



Methodology

Data Collection

Healthcare

- Dentists
- General practices
- Health Centres
- Hospitals
- Nursing homes
- Pharmacies

Education

- Third level institutions
- Secondary schools
- Primary schools
- Special needs schools

Retail

- Supermarket
- Shopping centres
- Corner shops

Leisure

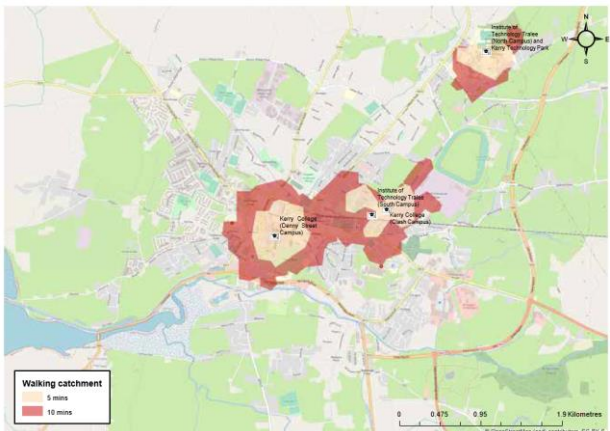
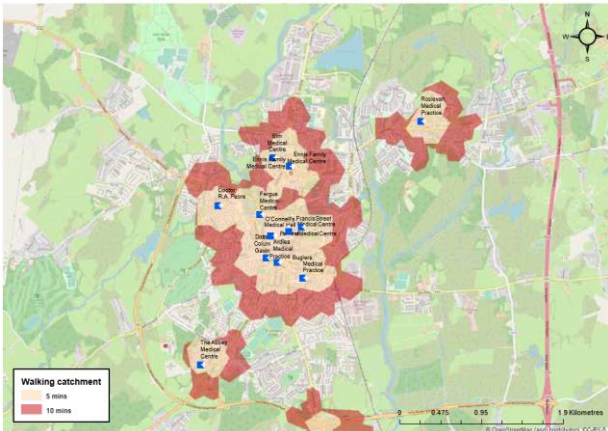
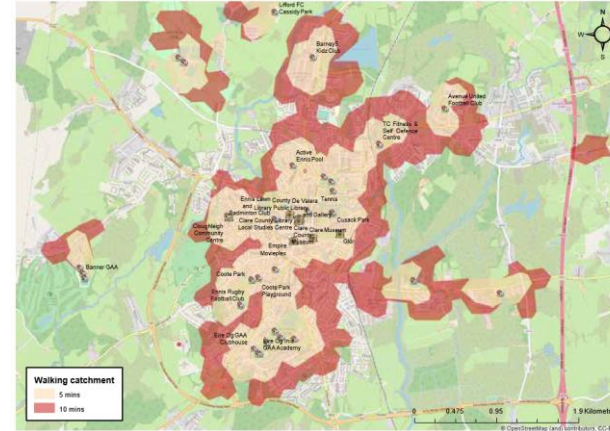
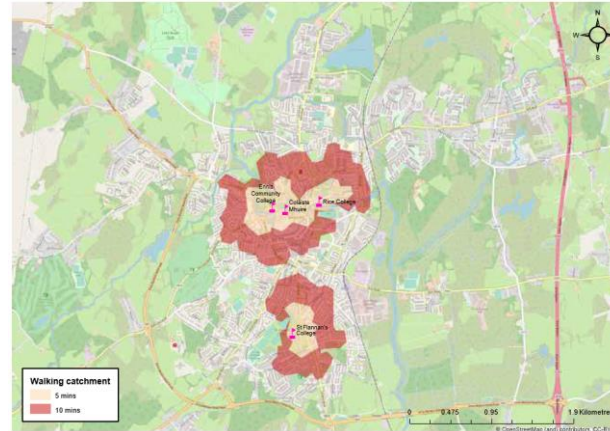
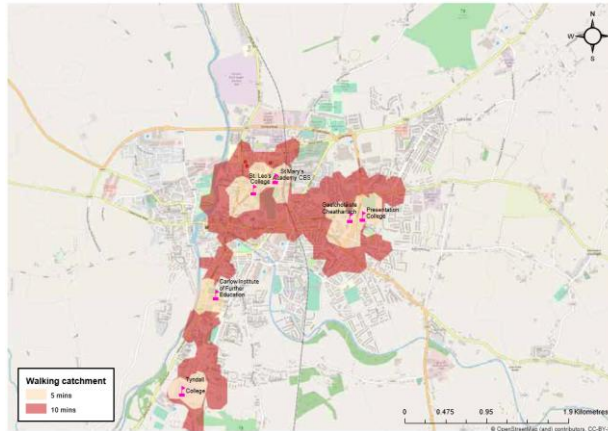
- Theatres
- Cinemas
- Libraries
- Museums
- Sports and Recreation Facilities

Public Transport

- Bus stops
- Rail stations



Existing Walking Catchment



Findings

CONSTRAINTS

Severance between residential estates

from residential estates to local and regional roads

Poor walking / cycling infrastructure

Limited bus services

(e.g. infrequent and only cover specific corridors of the towns)

Low cycle usage based on census data

Lack of services

particularly in the outskirts of the town centres

Findings

Opportunities

Provision of walk /
cycle bridges across
rivers

Improvement to
bus services

(e.g. new local services,
increase in frequency, new bus
stops)

Provision of
connections between
residential estates

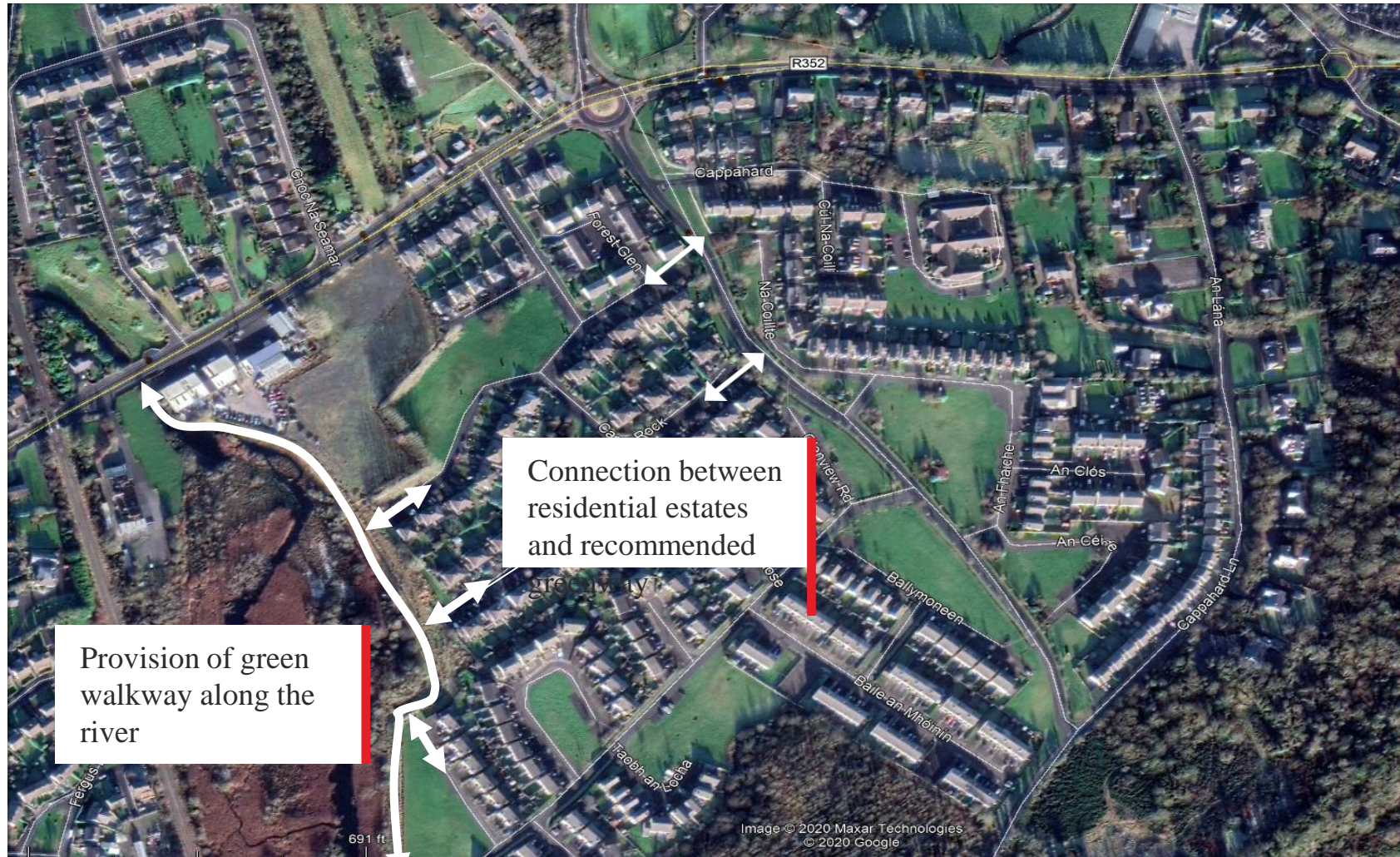
Provision of
connections

to existing walking /
cycling facilities



Recommendation Examples - Ennis

Constraint: No connection between residential estates and potential river walkways



Impact of the Study

Government of Ireland's National Sustainable Mobility Policy

Case Study | 10-minute towns initiative

The Southern Regional Assembly's (SRA) Regional Spatial and Economic Strategy (RSES) and Metropolitan Area Strategic Plans for Cork, Limerick-Shannon, and Waterford, set a vision for the Southern Region to become one of Europe's most "Creative", "Innovative", "Liveable" and "Greenest" regions.

Through Interreg Europe's MATCH-UP Project⁶, the SRA with ARUP developed a "10 Minute Towns Framework"⁷ to implement the RSES's Regional Policy 176 "10-Minute Cities and Towns". The concept promotes permeable mobility where access to all essential services is within a 10-minute walk/cycle or public transport connection from people's homes with benefits including lower emissions, improved health, placemaking and quality of life. The framework provides a step-by-step methodology for local authorities to map their cities and towns, providing guidance for catchment mapping, modelling walking/cycling networks, identifying constraints and required infrastructure improvements. Local authorities can use the framework in sustainable planning

for cities and towns providing the necessary empirical evidence to support funding applications for sustainable mobility initiatives and in support of local transport plans and metropolitan area transport strategies.



The SRA continues disseminating the attributes of 10 Minute Cities and Towns, increasingly supported through city and county development plans. The SRA will host learning workshops, in association with the Department of Transport and the NTA, to increase knowledge of transport policy support, guidance tools including the 10 Minute Cities and Towns Framework and funding streams for sustainable mobility actions in 2022 in the Southern Region.

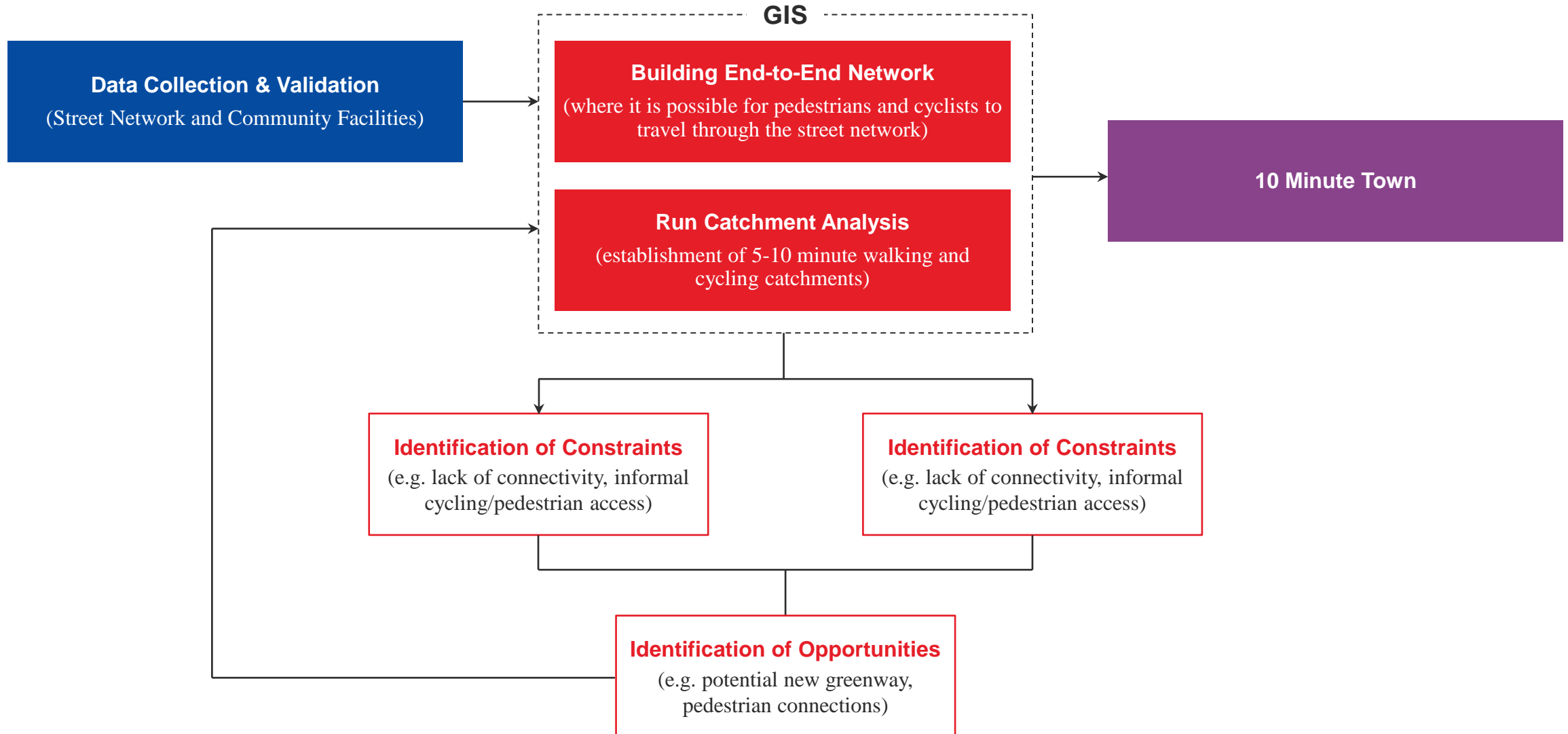


Rialtas na hÉireann
Government of Ireland

National Sustainable Mobility Policy



10 Minute Town Framework



Key Lessons

Importance of having
validated data

Regular and clear
communication

With client and local authorities

Understanding
constraints and
opportunities

Importance of using
GIS

Automation will also make
the process faster as analysis
would go through iterations

Thank you

Questions?



ARUP